



› Case study

Effortless luxury thanks to the REID **PORTA**GANTRY

COMPANY

Maxim Lifting Services

DATE

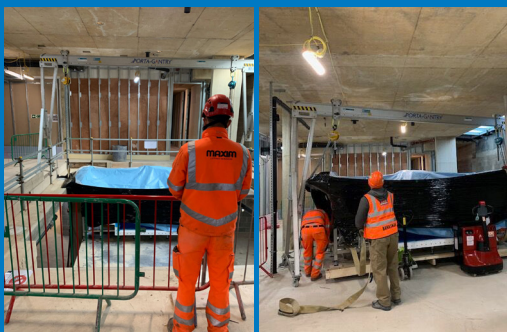
2021

LOCATION

Royal Warwick Square,
Kensington, London

PRODUCT

PORTAGANTRY



A **PORTAGANTRY** lifting solution made easy work of installing a luxury spa pool in a basement where the maximum working height was 3500mm and each section weighed around 900kg.

The background

At Berkeley Homes St Edward's new development of premium quality apartments in the Royal Borough of Kensington and Chelsea, Maxim Lifting Services were tasked with bringing in a three-section swim spa into a basement with a restricted working height and lifting and lowering each section into the perfect position.

The challenge

Access to the basement was via a spiralling ramp into the underground car park which had its own 2250mm height restriction ruling out mobile or spider cranes for the project. Each of the 900kg sectors of the swim spa was also bulky at 4150 wide x 1615 high which meant the lifting solution had to be portable, versatile and heavy duty.

The solution

Maxim Lifting Services regularly deploys REID's **PORTAGANTRY** systems on projects where space and accessibility are key. At Royal Warwick Square, the team used electric pallet trucks to transport the swim spa sections down the car park ramp and into the basement area.

They then used an easily assembled 2000kg model **PORTAGANTRY** with a 6m 3000kg WLL height adjustable beam set at 3200mm - easily within the 3500mm height restriction imposed. The beam was fitted with 2 rollers, with a 200kg 6m block chain attached for lifting and lowering the individual sections.

The big benefit of the **PORTAGANTRY** on this project was fact that it can be moved under load. The swivel locking castors meant that each section could be lifted and then manoeuvred slowly and safely along the space dug for the spa pool before being lowered securely into position.

The whole operation took less than a day, fitting easily within the schedule for the fit out of the spa, ready for completion in July 2021.

The feedback

"The **PORTAGANTRY** systems are ideal for lifts where mobile cranes or spider cranes can't reach, fit or are simply not an option. The versatility in range means that beams of varying length and safe working loads can be put together to suit varying applications. I have used the **PORTAGANTRY** at different heights, lifting various weights and even in tandem with each other. They continue to perform well in all situations and in all applications"

**Greg Aagaard, Appointed Person for Lifting Operations,
Maxim Lifting Services**

Get in touch to find out how we can help with your lifting and lowering requirements:

- > +44 (0)1291 620 796
- > enquiries@reidlifting.com
- > www.reidlifting.com